

Electrical solutions for the energy transition  
Line card

# Electrical power solutions to advance the energy transition



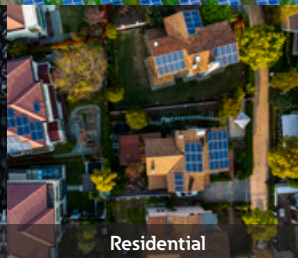
Buildings



Commercial & industrial



Healthcare



Residential



Utilities

The transition to a more sustainable, low-carbon future is accelerating.

And this energy transition is driven by the progressive replacement of carbon-based fuels with renewables, clean air regulation and the direct and indirect electrification of more applications. The growth of renewables, localized electricity production and bi-directional energy helps more homes, businesses and communities produce their own clean, dependable energy for less reliance on the utility grid. Count on Eaton for the technologies and digital intelligence needed for you to join the energy transition. Through our Everything as a Grid approach, infrastructures can be re-vamped to manage and optimize renewable integration, so you can realize more efficient, sustainable power that costs less.

**EATON**

*Powering Business Worldwide*

**Everything as a Grid** is our approach to the future of energy. We're reinventing the way power is distributed, stored and consumed, to meet the energy demands of tomorrow while improving the lives of people and the health of the planet today.

With our expertise in electrical infrastructure, vehicle electrification and digital solutions, we're helping companies, communities and utilities realize the limitless possibilities of flexible, intelligent and renewable power.

## EV charging infrastructure



### Green Motion Building

- AC Level 2 charging at 9.6 kW, 240 Vac
- Multi-tenant and workplace charging solution



### Green Motion Building Pro

- AC Level 2 charging at 11.5 kW, 240 Vac with adjustable output between 32 A, 40 A and 48 A based on infrastructure capacity
- Commercial and destination charging solution for passenger vehicles



### Green Motion Fleet

- AC Level 2 charging at 19.2 kW, 240 Vac
- Commercial, high-power charging for fleet applications



### Green Motion Fleet Pro

- AC Level 2 charging at 19.2 kW, 240 Vac
- High-power fleet depot and industrial charging
- Robust metal enclosure designed for maximum durability in industrial settings



### Green Motion EV Smart Breaker Chargers

- AC Level 2 charging at 7.7 kW, 240 Vac
- Designed for residential and multi-tenant applications
- Multiple installation options offer flexibility and efficiency



### EV Charging Busway

- 19.2 kW AC Level 2 charger integrated bus plug at 240 Vac
- Flexible and scalable, overhead charging solution
- Designed for large fleet and industrial applications
- Continuous current up to 5,000 A Cu Up to 4,000 A Al



### Pow-R-Line Xpert EV charging panelboards

- AC Level 2 charging at 7.7 kW, 240 Vac (up to 10)
- Highly scalable solution: adding new EV chargers is as easy as adding a new circuit breaker
- NEMA 1, 2, 3R, 4, 4X and 12 enclosures available
- Continuous current rating: 250-400 amps
- Fully-rated to 10 kAIC



### Pow-R-Line Xpert EV charging switchboards

- AC Level 2 charging at 7.7 kW, 240 Vac (up to 18)
- Consolidates stand-alone equipment into a single system to simplify delivery and reduce equipment costs



### Green Motion DC fast charger

- 50kW - 150kW
- 300 A cables
- Supports OCPP 1.6j
- Ethernet and 4G cellular connectivity
- Multiple configurations that make on-the-go charging fast and easy



### Eaton Bussmann series CCP disconnect switches and Class CF CUBEFuses

- High SCCR and compact footprint allow for higher panel SCCR while reducing panel footprint
- Patented Amp rejecting feature prevents overfusing
- Continuous current rating: 1-400 A
- Multi-wire lugs available for further space savings
- Ease of selective coordination



### Eaton Bussmann series Quik-Spec Coordination Panel (QSCP)

- High SCCR: up to 200 kA
- NEMA 1 and 3R enclosures available
- Continuous current rating: up to 600 A



### Charging Network Manager

- Oversee charging locations and stations
- Enable driver access and control
- Monetize charging infrastructure
- Reduce costs with load management

# Solar



## AC safety switches – general duty 240 Vac and heavy duty 600 Vac

- Ideal for residential and commercial applications
- NEC 230.62 (C) compliant line side barrier
- UL 98 Listed
- Custom solutions available through Flex Center



## Renewable energy safety switches – 800 Vac and 1000 Vac

- Rated for bi-directional power flow
- Enhanced visible blade
- NEC 230.62 (C) compliant line side barrier
- UL 98 Listed



## DC safety switches - 600 Vdc, 1000 Vdc, 1500 Vdc

- Rated for bi-directional power flow
- Enhanced visible blade
- Viewing window available (standard on 1500 Vdc)
- NEC 230.62 (C) compliant line side barrier
- UL 98B listed



## Solar duty transformers

- Three-phase
- 150°C temperature rise
- Bi-directional
- DOE 2016 efficiency compliant and UL listed
- 15-500 kVA



## 800V, 600V, 480V switchboards

- Revenue-grade energy monitors and panel meters
- InsulGard™ partial discharge and BushingGard continuous testing
- Available for transformer, capacitor, motor, feeder and line distance protection



## Three Phase Liquid-Filled Medium-Voltage Transformers

- Up to 12000 KVA, 35 kV, 200 BIL
- FR3 Fluid - Environmentally superior, Life extending, No reported fires, 75 deg C AWR
- Above grade Close Couple to any AC Recombiner or Inverter
- UL Listed & FM Approved



## Smart breakers

- Enables intelligent home energy management through monitoring and control of any connected appliances and devices
- Maximizes renewables and energy storage
- Easily integrates with popular smart home systems
- Installs in most Eaton loadcenters



## BrightLayer Home app

- Control connected devices remotely
- Easily view power usage and make more informed energy decisions
- Create schedule to maximize savings during off-peak hours



## Eaton Bussmann series photovoltaic fuses

- Meets UL and IEC standards for global acceptance
- Designed for the protection and isolation of photovoltaic systems
- Low watts loss for energy efficiency
- Provides fast-acting protection under low-fault current conditions in PV systems
- AC ratings up to 800Vac and DC ratings up to 1500Vdc

# Energy storage



## xStorage Battery Energy Storage System

- 250 to 1000 kW
- Scalable power and energy
- Outdoor rated
- Applications: peak shaving, load shifting, backup power, solar + storage, EV fast charging

## What matters: building a sustainable and resilient future

Eaton stands ready to support America's federal stimulus initiatives and build a stronger future for our families and communities. The federal stimulus initiatives will fund major improvements to the nation's aging infrastructure, including grid resiliency, energy efficiency, clean water and safer transportation, while reducing negative impacts on our environment.

Learn more about your funding options for your clean energy project at [Eaton.com/StrongerFuture](https://www.eaton.com/StrongerFuture)

# STRONGER FUTURE

# Microgrid/DER



## Microgrid feasibility studies, design and turnkey services

- Services to develop a tailored and comprehensive distributed generation plan
- Feasibilities studies determine techno-economic fit
- Hardware-in-the-loop modeling to ensure optimal operation
- Electrical system studies to assure safe and reliable operation



## Power Xpert Microgrid Controller

- Local and system controllers for energy storage, photovoltaics, generators, load management, utility interconnection, fuel cells and other renewable generation resources
- Local HMI and historian
- Configured programming
- Modular and scalable



## Pow-R-Line Xpert Microgrid Switchboard

- Intelligent switchboard solution helps simplify your microgrid deployment
- Intelligent controls
- Scalable design
- Efficient deployments



## Energy as a Service (EaaS) financing

- Finance your microgrid or DER integration project without any upfront capital
- Helps businesses gain control over their energy expenses
- Minimizes risk
- Maximizes revenue generation opportunities

# Services



## Turnkey electrical solutions

- Project management
- Engineering, procurement and construction (EPC)
- Embedded resources



## Electrical system studies

- Power quality site surveys and disturbance monitoring
- DER interconnection studies
- Resiliency studies
- Harmonics analysis studies
- Arc flash analysis
- Load/capacity analysis for adding EV charging



## Electrical power distribution field services

- Startup and commissioning
- Preventive and predictive maintenance
- 4/7/365 emergency response and remote services
- Service contracts



## Cybersecurity services

- Complete life cycle management
- Assessments ranging from initial audit to comprehensive analysis
- Secure configuration and hardening of Eaton and Non-Eaton devices
- Additional services including network segmentation, threat monitoring, and protective solutions for critical assets and systems

For more information, please visit  
[Eaton.com/EnergyTransition](https://www.eaton.com/EnergyTransition) and  
[Eaton.com/EverythingAsAGrid](https://www.eaton.com/EverythingAsAGrid)

**Eaton**  
1000 Eaton Boulevard  
Cleveland, OH 44122  
United States  
[Eaton.com](https://www.eaton.com)

© 2023 Eaton  
All Rights Reserved  
Printed in USA  
Publication No. SA180014EN / GG  
November 2023

Eaton is a registered trademark.

All other trademarks are property of their respective owners.

Follow us on social media to get the latest product and support information.

